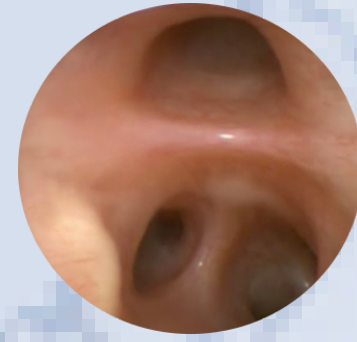


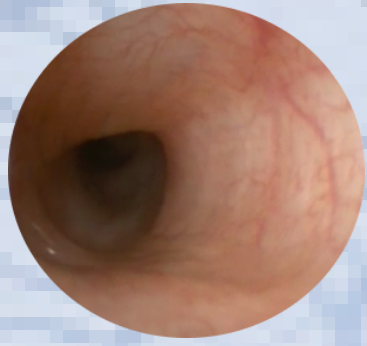
VIA AÉREA PEDIÁTRICA



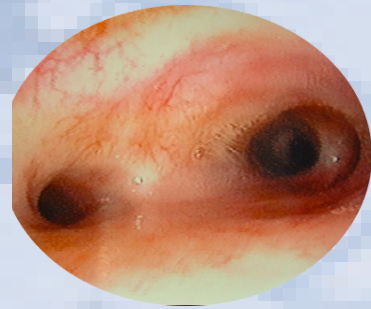
BLIE



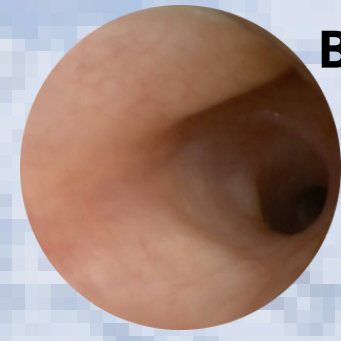
BLMD



BLSE



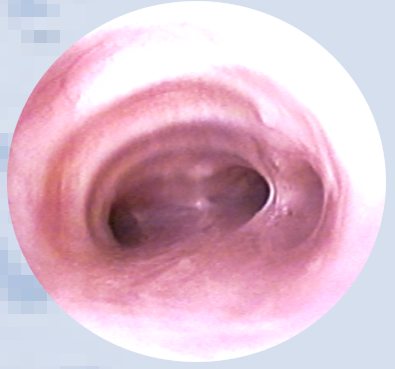
Estenose Brônquio Principal Esquerdo



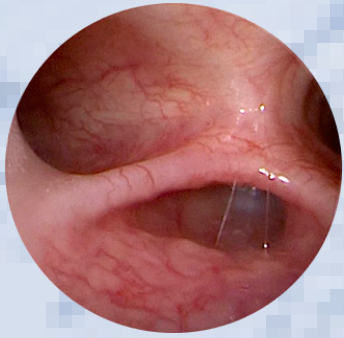
BLSD



CARINA



Brônquio Traqueal



Fístula Traqueoesofágica



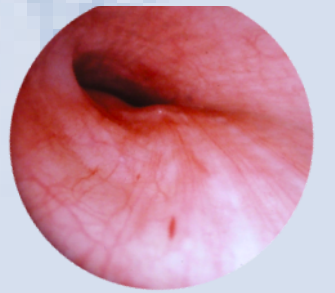
Traqueomalácia



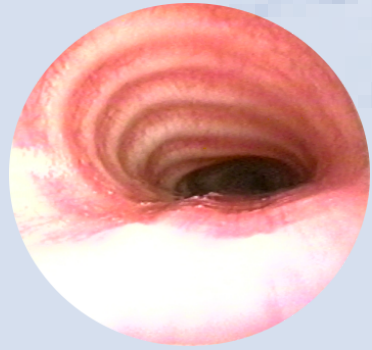
Corpo Estranho Brônquio Principal Direito



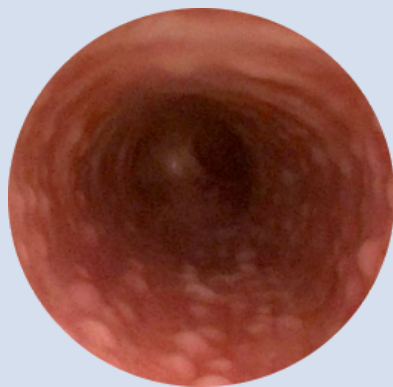
TRAQUEIA



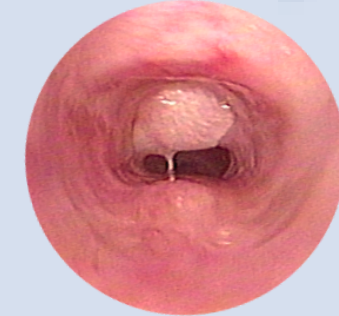
Arco Aórtico Duplo



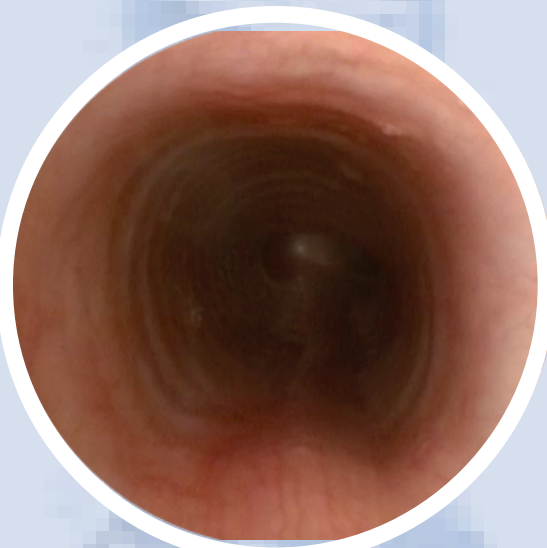
Compressão Artéria Inominada



Padrão de Paralelepídeos



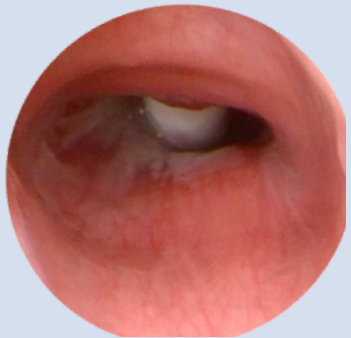
Granuloma Traqueal Supraestomal



SUBGLOTE



Anéis Traqueais Completos



Cânula de Traqueostomia



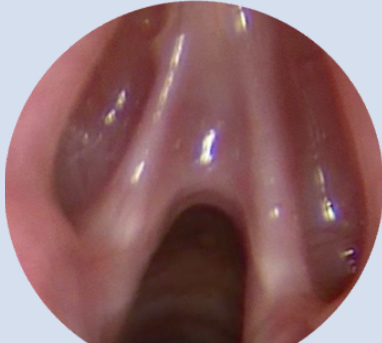
Hemangioma Subglótico



Estenose Subglótica



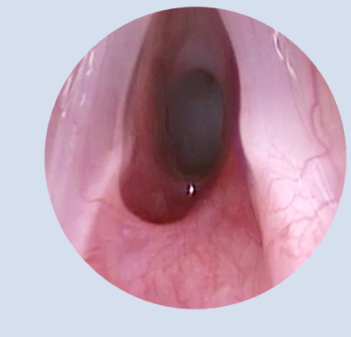
Fenda Laringotraqueal



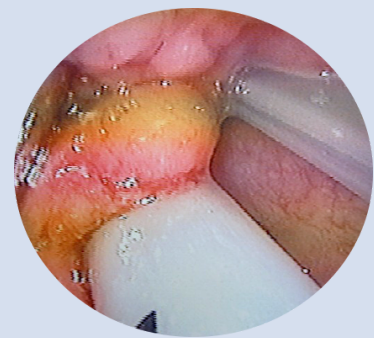
Membrana Laríngea



Nódulos Laríngeos



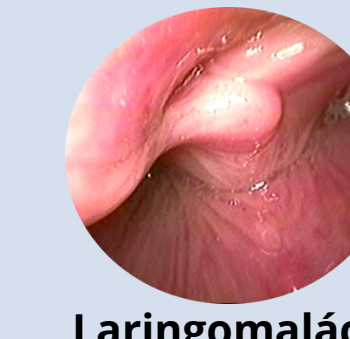
Estenose Glótica Posterior



Epiglotite Aguda-HIB



CORDAS VOCAIS



Papilomatose Laríngea



Edema Supraglótico

Laringomalácia



Cisto Sacular

Idade	Tubo Endotraqueal				Cânula de Traqueostomia								Balão de Dilatação							
	Shiley®		Möllinkrodt®		Shiley®				Tracoe (Mini)®				Cordis Powerflex®		Aeris®					
	ID	OD	ID	OD	Tamanho	ID	OD	Comp.	Tamanho	ID	OD	Comp.	OD	Comp.	RBP	OD	Comp.	Press Max.		
Prematuro <1kg	2.5	3.6	2.5	3.6	Recém-Nascido(NEO)								4.0	40mm	15 atm					
Prematuro 1-2.5kg	3.0	4.3	3.0	4.3	3.0	3.0	4.5	30	3.0	3.0	4.3	32	5.0	40mm	15 atm	5.0	30mm	17 atm		
Recém-Nascido - 3m	3.5	4.9	3.5	4.9	3.5	3.5	5.2	32	3.5	3.5	5.0	34	6.0	40mm	15 atm					
3 - 18m	4.0	5.6	4.0	5.6	4.0	4.0	5.9	34	4.0	4.0	5.6	36								
1 - 3 anos	4.5	6.2	4.5	6.2	4.5	4.5	6.5	36												
					Pediatría (PED)				Pediatría (PED)											
					3.0	3.0	4.5	39	3.0	3.0	4.3	36								
					3.5	3.5	5.2	40	3.5	3.5	5.0	40								
					4.0	4.0	5.9	41	4.0	4.0	5.6	44								
					4.5	4.5	6.5	42	4.5	4.5	6.3	48								
1.5 - 5 anos	5.0	6.9	5.0	6.9	5.0	5.0	7.1	44	5.0	5.0	7.0	50	7.0	40mm	15 atm	7.0	30mm	17 atm		
3 - 10 anos	5.5	7.5	5.5	7.5	5.5	5.5	7.7	46	5.5	5.5	7.6	55	8.0	40mm	15 atm	8.0	30mm	17 atm		
					Adulto				Adulto											
					4	5.0	9.4	62	4.0	4.0	7.2	56								
									5.0	5.0	8.6	66								
					6	6.4	10.8	74	6.0	6.0	9.2	72								
									7.0	7.0	10.4	74								
					8	7.6	12.2	79	8.0	8.0	11.4	76								
									9.0	9.0	12.5	78								
> 10 anos	6.0	8.2	6.0	8.2	10	8.9	13.8	79	10.0	10.0	13.8	80	9.0	40mm	14 atm	9.0	30mm	17 atm		

Idade	Broncoscópio Karl Storz®					Óptica			Sucção Flexível
	No.	ID	OD	Compr.	Ref.	Ref.	OD	Compr.	
Prematuro <1kg	2.5	3.5	4.2	18.5cm	10339F	10017AA	1.9	18cm	4F
Prematuro 1-2.5kg	3.0	4.3	5.0	18.5cm	10339E	10017AA	1.9	18cm	4F
0 - 2 anos	3.0	4.3	5.0	26cm*	10339EE	10020ATA	2.9	30cm	4F
2 - 4 anos	3.5	5.0	5.7	26cm*	10339DD	10020ATA	2.9	30cm	4F, 5F
4 - 6 anos	3.7	5.7	6.4	26cm	10339GG	10020ATA	2.9	30cm	4F, 5F, 6F
6 - 12 anos	4.0	6.0	6.7	30cm	10339C	10005AA	4.0	30cm	4F, 5F
	5.0	7.1	7.8	30cm	10339B	10005AA	4.0	30cm	4F, 5F, 6F

*Use uma ponte de telescópio de 4cm (10338R).

Pinça Óptica Karl Storz®	Óptica		
	Ref	OD	Compr.
10378KF			
10378HF	10324AA	2.9cm	36cm
10378KSF			

Autores: Villegas, MC. Ospina, JC. Téllez, PA.
Unidade de Otorrinolaringologia e Cirurgia Maxilofacial.
Bogotá, Colombia. 2020.

